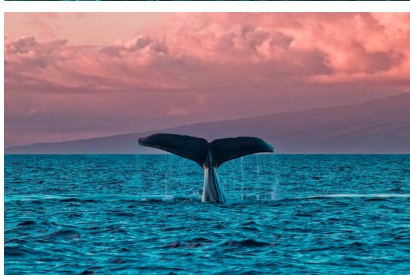


CASTLE KAMA'OLE SANDS

Aloha!



2025 FACT SHEET

CASTLE KAMA'OLE SANDS | MAUI

Located across sandy Kama'ole Beach Park III in sunny Kihei on Maui's south shore, the Castle Kama'ole Sands has been welcoming guests to Maui for 40 years. Spanning 15-acres of manicured gardens, ponds and water features; 10 four-story buildings offer a variety of one-, two-, and three-bedroom vacation condos.

There is so much to enjoy including a swimming pool, kiddie pool, jetspas, barbecue grills, fitness center and 4 courts for both regular and spec tennis. The resort offers weekly activities that may include whale tales, turtle talks, hula, music and tennis clinics and a guest activity desk which can make reservations for tours, beach equipment rentals and luau dinner shows.

With a central location, pickup groceries at the nearby Foodland, and head to the deli case in the back of the store to choose from an array of poke of all kinds for a real taste of Hawaii. Otherwise there are numerous Kihei restaurants ranging from casual pizza, sandwiches and burgers to sushi, thai, seafood and steak. Or venture to the neighboring luxury Wailea resort for exquisite dining by renown Maui chefs.



2695 S. Kihei Road

Kihei, Hawai'i 96753

P: +1 (808) 270-1200

F: +1 (808) 879-3273

www.castleresorts.com

CASTLE 
RESORTS & HOTELS

CASTLE KAMA'OLE SANDS

400 CONDO SUITES | 4 FLOORS | 10 GUEST ELEVATORS

SERVICE

- Front Office Hours: 24 Hours
- Check-in: 3 pm
- Check-out: 11 am
- Computer Access in lobby
- All major credit cards accepted

RESORT AMENITIES

- Barbecue areas (5)
- Pickle Ball (2)
- Exercise room
- Jet spas (2)
- Assigned parking
- Soft drink machine
- Ping Pong table available
- Sun deck
- Swimming pool
- Tennis courts (2) with free lessons
- Travel/activities desk
- Complimentary Wireless Internet access available in the lobby and by pool side
- Kiddie wading pool
- Gorgeous tropical gardens
- FREE local newspaper daily

ROOM AMENITIES

- Air conditioning in living room
- Ceiling fans
- Cable television
- DVD player
- Clock/radio
- Full kitchen: microwave, dish washer, blender, coffee maker, toaster & refrigerator
- Hair dryer
- High speed Internet access / WiFi
- In-room safe - some rooms (\$)
- Iron/ironing board
- Private lanai
- All non-smoking rooms
- Phone (FREE local & 800 calls)
- Shower/tub
- Washer/Dryer

RESTAURANTS & LOUNGES

- Variety of restaurants within walking distance of resort

RECREATION

& ENTERTAINMENT

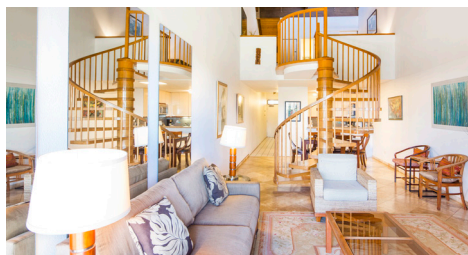
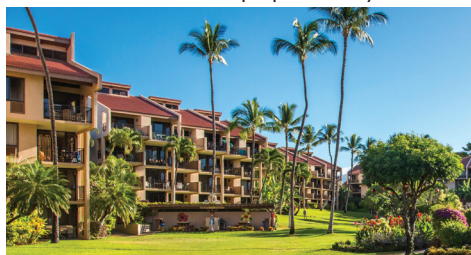
- Tennis Clinics
- Marine Life Talks with a Naturalist
- Hula & Music

GDS

- Galileo WV73281
- Sabre WV23438
- Amadeus WVOGGKSM
- Pegasus WVCASKS
- Worldspan WVKAMA

DISTANCE FROM

- Kama'ole Beach III - Across the Street
- Kahului Airport - 15 mi
- Downtown Kihei - 3.4 mi
- The Shops at Wailea - 2 mi
- Lahaina Town - 25.9 mi



GUEST ROOMS

Category	Type of Bedding*	Guests	Max Pax	Area ft ²	Area ft ² Incl. Lanai
1 Bdr/2 Bath Standard	1K OR 1Q + 1SB	1-4	4	818	884
1 Bdr/2 Bath Garden View	1K OR 1Q + 1SB	1-4	4	818	884
1 Bdr/2 Bath Partial Ocean View	1K OR 1Q + 1SB	1-4	4	818	884
2 Bdr/2 Bath Standard	1Q + 2T + 1SB	1-6	6	1036	1102
2 Bdr/2 Bath Garden View	1K OR 1Q + 2T + 1SB	1-6	6	1036	1102
2 Bdr/2 Bath Partial Ocean View	1K or 1Q + 2T or 1Q + 1SB	1-6	6	1036	1102
3 Bdr/3 Bath Deluxe	1 K + 1 Q + 4T + 1 SB	1-8	8	1188	1257

Type of Bedding may vary slightly per room and is for general room category reservations, types of bedding requests (K=King, Q=Queen, T=Twins, and SB=SofaBeds) are subject to availability and assigned upon arrival. Individual Unit reservations will have bedding of that unit confirmed at the time of booking. Extra bedding charges apply and are subject to availability. Room rates will vary based on demand and availability. Room rates and fees are subject to applicable taxes and are subject to change without notice. Room area footage is approximate and can vary per unit. **Rates may vary by day, by season and year-end pricing may apply. Minimum length of stay requirements may be implemented throughout the year. (\$) means that "Additional costs" apply. Other fees plus taxes will be charged and collected upon check-in; such as a Checkout Cleaning fee and a Reservation processing fee. A one-time Resort fee of \$40 plus tax per room (per 30 day stays and subject to change) will be charged to guests directly upon check-in.

BOOK BY CATEGORY OR BY INDIVIDUAL UNIT

At CastleResorts.com you can have your client choose the exact room they wish to stay in!

WORLDWIDE RESERVATIONS

For reservations, please contact our reservations office, your travel consultant,
book online at: www.castleresorts.com, or
via email at: reservations@castleresorts.com

Worldwide Direct: +1-808-545-3510

Toll-Free (U.S., Canada, & Saipan): +1-800-367-5004

Fax: +1-808-545-2163

CASTLE 
 RESORTS & HOTELS



Follow us on Instagram
 @CastleResorts



Find us on Facebook at
www.facebook.com/CastleResortsAndHotels